

 **guntû**









SETOUCHI ROAMING

A small ryokan floating on the Seto Inland Sea — guntû offers a luxury journey through Japan unlike any other.

guntû roams the calm waters of the Seto Inland Sea at the heart of the Setouchi region in western Japan. This beautiful and alluring tapestry weaves together numerous chains of more than 700 islands, spread across 23,000 square kilometers and 7,000 kilometers of shoreline.

Since ancient times, commerce and culture have flowed through these waters along maritime routes connecting Osaka and Kansai to western Japan and the world beyond. Traces of pirate clans are still hidden along Setouchi's shores, while Korean emissaries and Western missionaries left

footprints in its ports.

guntû was conceived as an inn where travelers can feel at home on the sea while enjoying the natural beauty and culture of Setouchi.

Relax in spaces reminiscent of a Japanese ryokan, as the ship becomes part of the soft scenery of Setouchi.



ACCOMMODATIONS

guntû accommodates guests in 17 cabins with five suite styles. Designed by architect Yasushi Horibe, known for his Japanese-style homes, the experience aboard our floating ryokan is like staying at a friend's elegant guest house that blends into the Setouchi seascape.

Each cabin features terraces located just above the water and warmly finished wooden interiors that frame the simple scenery of Setouchi. Enjoy the highest standard of comfort with luxurious Imabari towels, sheets, and other amenities.

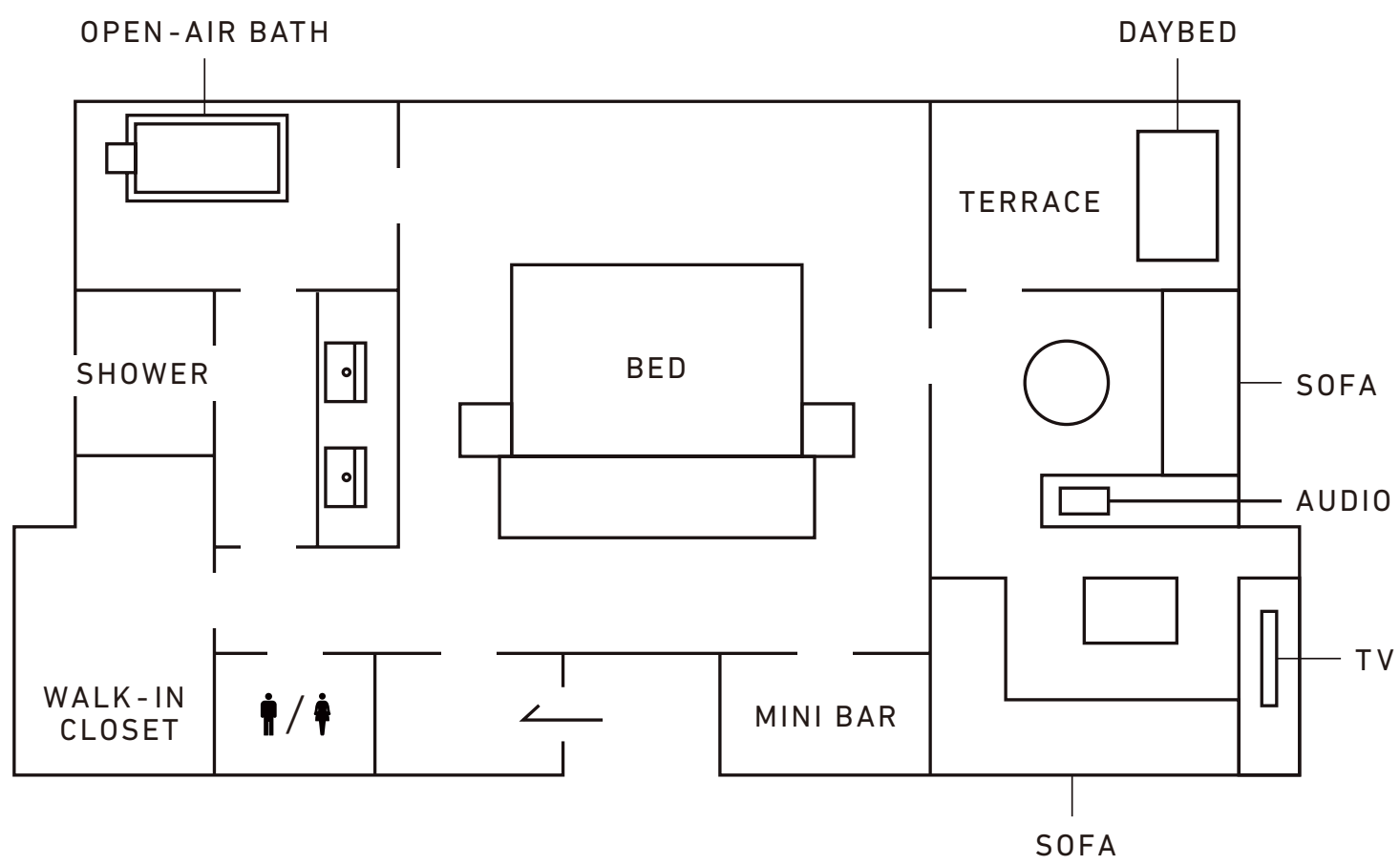


The guntû Suite

(1 cabin)

—

The bow of the ship is fully occupied by The guntû Suite. This one-of-a-kind cabin is the only suite with forward-facing windows and views from both sides of the ship, giving you an unmatched sense of gliding across the sea.



The guntû Suite (Approximately 90 m² / 969 ft²)

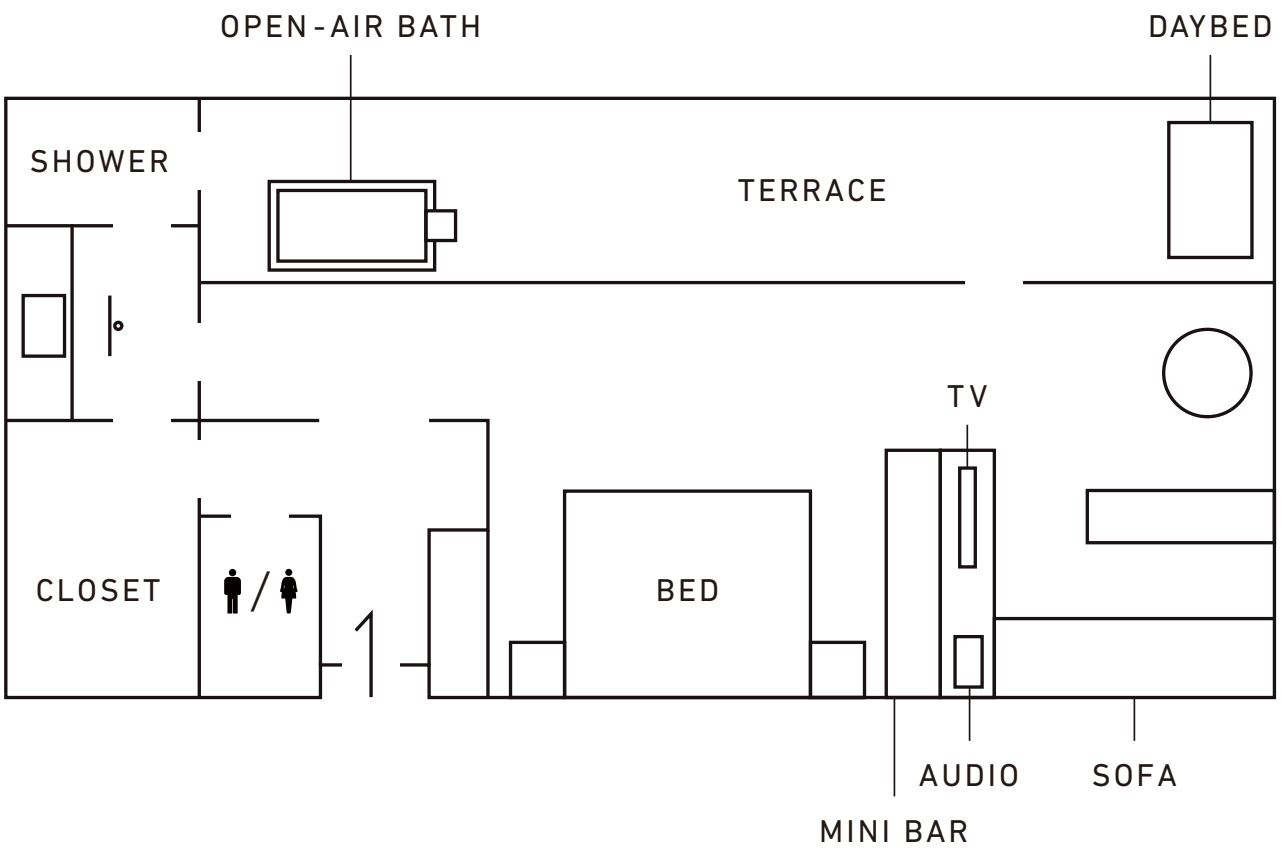
- MAIN FEATURES
- Simmons Beds (Hollywood Twin)
 - Sofa / Writing Desk
 - Terrace with Daybed
 - Open-Air Cypress Bath
 - Minibar / Wine Cellar
 - iPad
 - Bang & Olufsen Bluetooth Speaker
 - Audio Tekne Sound System
 - Television
 - Complimentary Wi-Fi



Grand Suite

(2 cabins)

The Grand Suite has the largest terrace of the five cabin types. From the open-air bath on the spacious terrace, soak in the private, panoramic view of Setouchi's stunning seascape.



Grand Suite (Approximately 80 m² / 862 ft²)

MAIN FEATURES

- Simmons Beds (Hollywood Twin)
- Sofa / Writing Desk
- Terrace with Daybed
- Open-Air Cypress Bath
- Minibar / Wine Cellar
- iPad
- Bang & Olufsen Bluetooth Speaker
- Audio Tekne Sound System
- Television
- Complimentary Wi-Fi

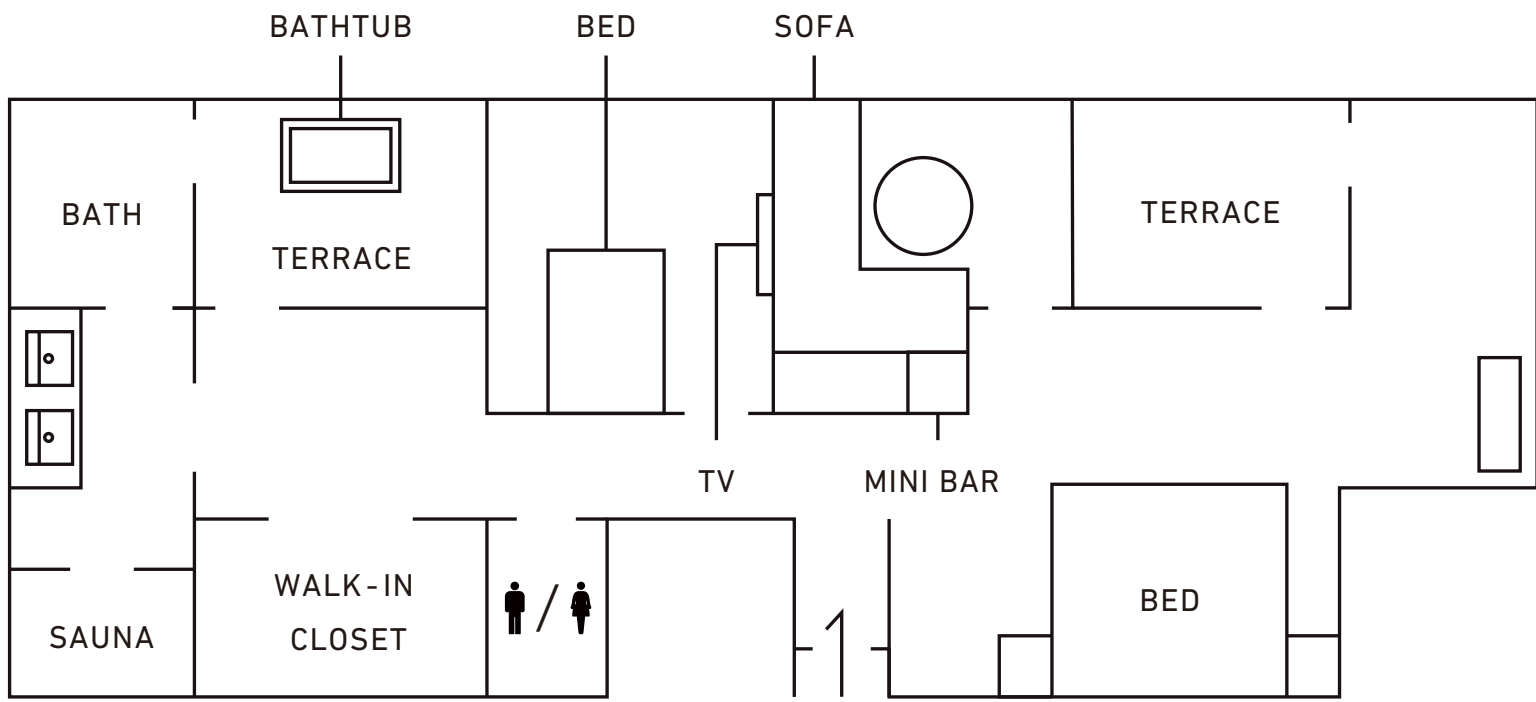


Terrace Suite Prestige

(2 cabins)

The largest of our three terrace suites, the Terrace Suite Prestige promises a journey in at-home comfort.

This is the only suite type on guntû that can accommodate three guests, with a layout featuring ample room for connection and personal time, as well as an en-suite sauna perfect for quiet reflection.



Terrace Suite Prestige (Approximately 90 m² / 969 ft²)

MAIN FEATURES

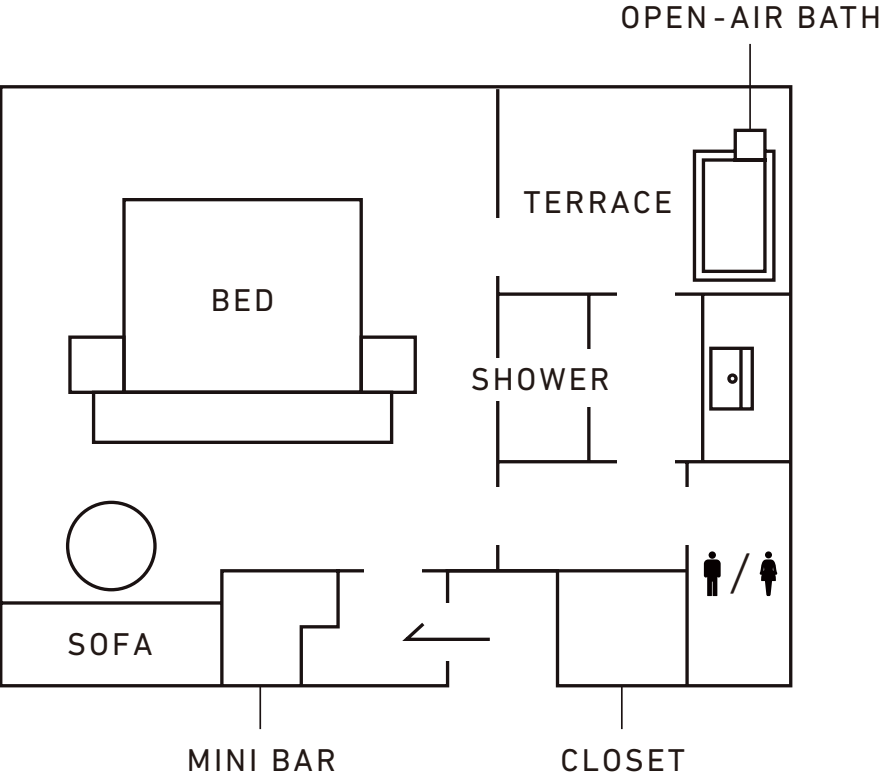
- Simmons Beds (2 Hollywood Twin / 1 Semi Double)
- Sofa / Writing Desk
- Terrace
- Inside Bath
- Open-Air Cypress Bath
- Dry Sauna
- Minibar
- iPad
- Bang & Olufsen Bluetooth speaker
- Television
- Complimentary Wi-Fi



Terrace Suite with Open-Air Bath

(2 cabins)

The bed is closest to the window in this suite, with an unobstructed, intimate view toward the horizon. The open-air bath lets you relax outdoors in the comfort of your own suite.



Terrace Suite with Open-Air Bath (Approximately 50 m² / 538 ft²)

- MAIN FEATURES
- Simmons Beds (Hollywood Twin)
 - Sofa / Writing Desk
 - Terrace
 - Open-Air Cypress Bath
 - Minibar / Wine Cellar
 - iPad
 - Bang & Olufsen Bluetooth Speaker
 - Complimentary Wi-Fi

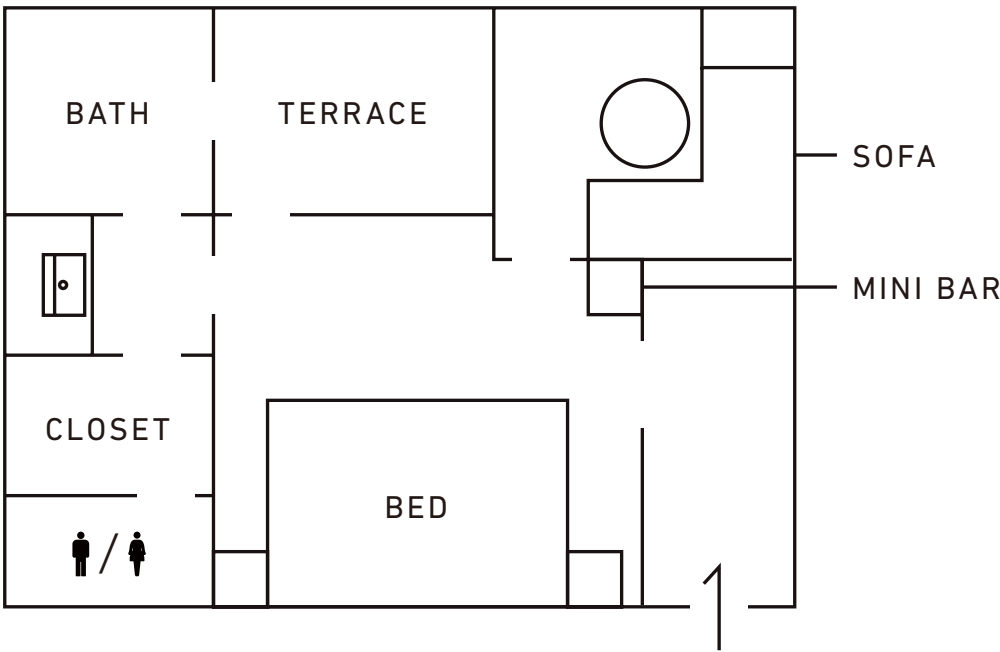


Terrace Suite

(10 cabins)

The sitting area offers an up-close view of the sea from the water's edge.

Located next to the terrace, the bathroom's large windows promise a pleasant bathing experience in any weather and a sense of connection with the sea.



Terrace Suite (Approximately 50 m² / 538 ft²)

MAIN FEATURES

- Simmons Beds (Hollywood Twin)
- Sofa / Writing Desk
- Terrace
- Bath
- Minibar / Wine Cellar
- iPad
- Bang & Olufsen Bluetooth Speaker
- Complimentary Wi-Fi



DINING

"What you want, as much as you want" is the essential concept of guntû hospitality.

Our cuisine makes use of ingredients sourced from producers across the whole of Setouchi, according to the day's weather and feeling. Our chefs can prepare unfamiliar delicacies your favorite way.

With the best ingredients for every type of dish, simplicity and refinement are the cornerstones of our menu.

Exceptional dining is one of the true pleasures on board as guntû drifts across the sea.



JAPANESE CUISINE

in the Dining Room

—

Our Japanese cuisine inherits the teachings of Kenzo Sato of Shigeyoshi, an acclaimed restaurant in Tokyo. Choose your favorite ingredients from a selection of fresh fish and meat from the Setouchi region, and it will be prepared as you wish — anything from sashimi to broiled fish. The head chef will present his special of the day for your selection.





SUSHI

at the Sushi Bar



Supervised by Nobuo Sakamoto of the sushi restaurant Nobu at Awajishi-
ma, the cozy six-seat sushi bar features a view of the ever-changing scen-
ery outside. Savor the delicate yet complex flavors of local fish served with
citrus, and the subtle differences resulting from the location and season of
the catch.





JAPANESE STYLE WESTERN CUISINE

in the Dining Room



guntû's Western cuisine is based on the nostalgic Japanese style of Western dishes known as *yoshoku*. Original guntû dishes such as seafood croquettes and stew are prepared simply and with great care using Setouchi ingredients. Small portions can be ordered to complement dishes from our Japanese menu.





COFFEE & DRINKS

at the Café & Bar / in the Lounge

—

At the Café & Bar, enjoy original island-inspired cocktails with a view over the bow from the open deck, under guntû's distinctive gabled roof. The Lounge, located at the stern, is a perfect place for quiet contemplation while browsing our library and enjoying a drink of your choice.





SLOW TIME

in the Lounge



The Engawa is a traditional Japanese style of veranda found in temples and houses. For generations, engawa have been where Japanese people enjoy moments lost in thought as they sip tea and admire at rock gardens. Dressed in *yukata* with a tray of your favorite snacks and sake, savor the slow flow of time in Japan.





WAGASHI & TEA EXPERIENCE

in the Lounge



The tea master serves matcha green tea and Japanese sweets at a table with chairs. The sweets are supervised by Joichiro Kita from Nara’s Kashiya, and made with carefully cultivated pure ingredients — right before your eyes on some routes.





RELAXATION & FITNESS

The spa area includes treatment rooms, communal baths, saunas and a gym. For relaxation, our original treatment and massage menus are tailored for the mood and physical condition of each and every individual. Choukoku-Lymph® Treatments are a slow and deep method of care performed while warming your body on a natural stone mat. From a facial to the entire body, guntû provides total care.

Japanese-style Nentai massage eases your body's distortions and tension, and nurtures a healthy state with an approach tailored to your needs. These appointment-only beauty and bodywork sessions are normally available in the treatment rooms. In addition, bodywork procedures are also available in The guntû Suite, Grand Suite, Terrace Suite Prestige and Terrace Suite.





EXPLORATIONS

Go ashore on islands along the ship's route with our dedicated speed boats for experiences that are inaccessible to most travelers: quiet morning strolls through traditional streetscapes, seasonal pleasures such as cherry blossoms and autumn foliage, or glimpses of local festivals that only take place once a year. Discover local ways of life and culture firsthand.

A wide-angle landscape photograph of a coastal region. In the foreground, a dense forest of green trees covers a hillside. Beyond the forest, a large body of water, likely a bay or inlet, stretches across the middle ground. A small town or village is nestled on a peninsula or hillside in the lower right, with several buildings visible. In the center of the bay, a small white boat is moving, leaving a wake. Further out, another larger ship is visible. The background is dominated by a range of blue, hazy mountains under a clear sky. The overall color palette is dominated by blues and greens, with a soft, hazy atmosphere.

ROUTES

After departing from its home port of Bella Vista Marina in Onomichi, Hiroshima, guntû roams Setouchi and anchors at night off the coast of darkened islands, never docking at other ports. We offer seven to eight regular routes through the eastern, western, and central areas of Setouchi.

WESTWARD ROUTES

Stretching from the islands of the Shimanami Kaido and Tobishima Kaido westward to the Kutsuna Islands and Kaminoseki, these routes travel through waters rich with the romance of history, home to Miyajima’s Itsukushima Shrine and Omishima’s Oyamazumi Shrine. The routes navigate between islands separated by narrow “Seto” straits, letting you glimpse the scenery of everyday life in Setouchi up close.



CENTRAL ROUTES

These routes cruise through the waterways of the Shimanami Kaido, a chain of six islands linked by seven bridges, and the Tobishima Kaido, a series of seven islands linked on the west end to Kure. The central routes have features of both the eastern and western routes, condensing the delicate and bold, still and dynamic allure of Setouchi.



EASTWARD ROUTES

Passing through the Kasaoka Islands and traveling beneath the Great Seto Bridge, these routes explore a region rich with distinctive industry and culture, from the art islands of Teshima and Naoshima to Shodoshima. The waters of the eastern Inland Sea are more wide-open than the west, full of impressive views of dynamic structures like the Great Seto Bridge and broad vistas of islands and towns in the distance.



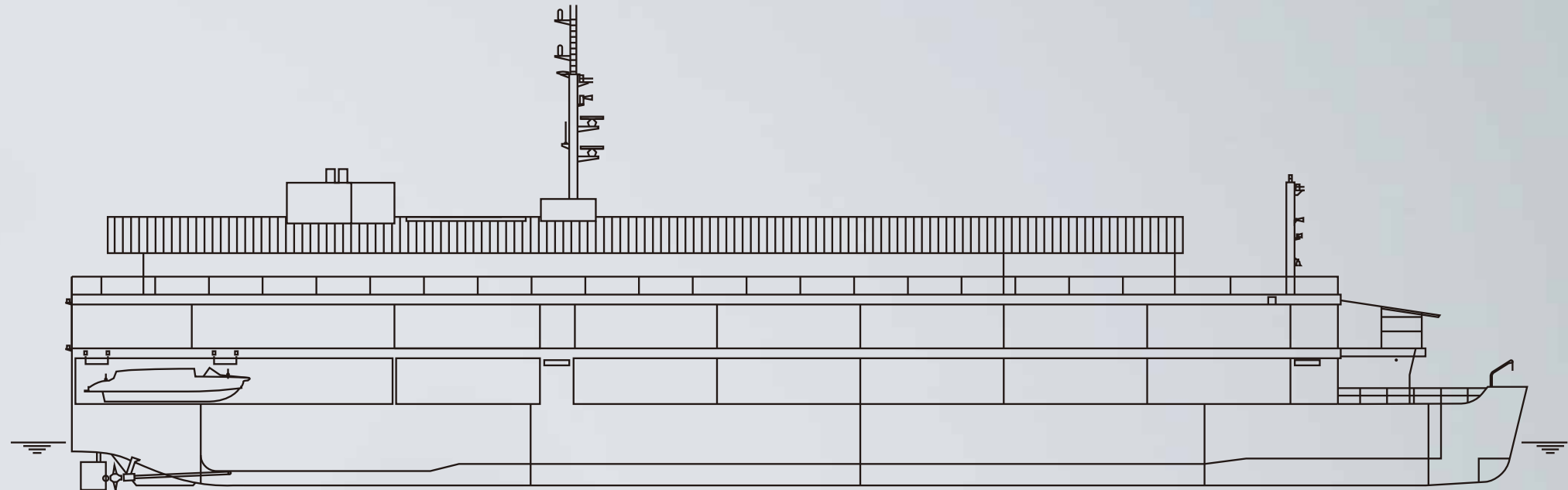
SHIP NAME : guntû

Our ship's name was taken from the local name of a blue crab native to the Setouchi region. We hope that by sharing Setouchi's rich delicacies and passing down its traditions and culture, guntû may earn the affection of our passengers, just as this little creature is beloved by local people. The circumflex above the 'u' (û) is evokes the ship's hull and the iconic shape of the gabled roof.

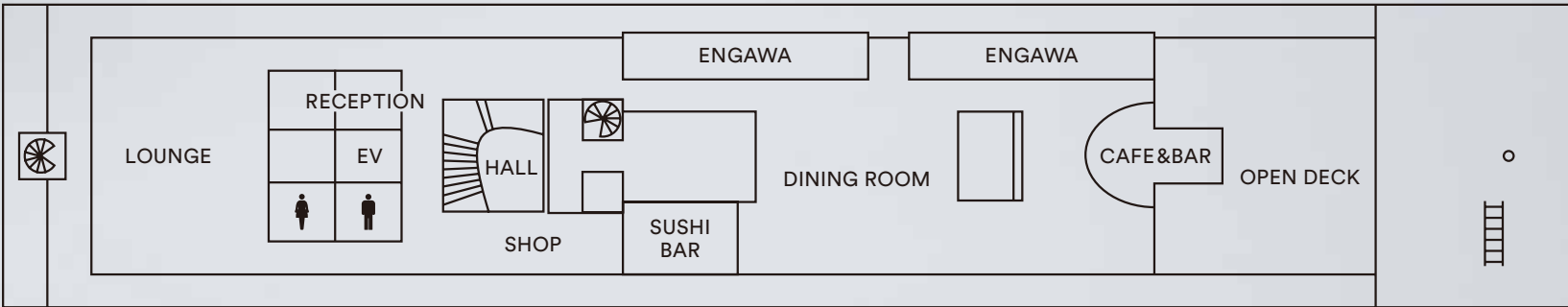


BASIC SPECIFICATIONS

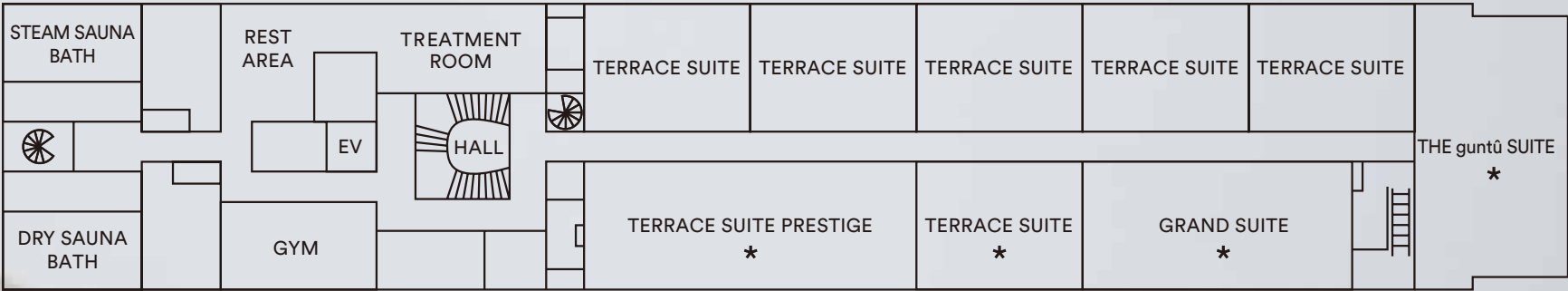
- Gross Tonnage : 3,013 tons
- Length : 81.2 meters
- Width : 13.75 meters
- Main Engine : 2 water cooled three-phase induction motors
- Cruising Speed : 10 knots
- Passenger Capacity : 36 (Guest Number)



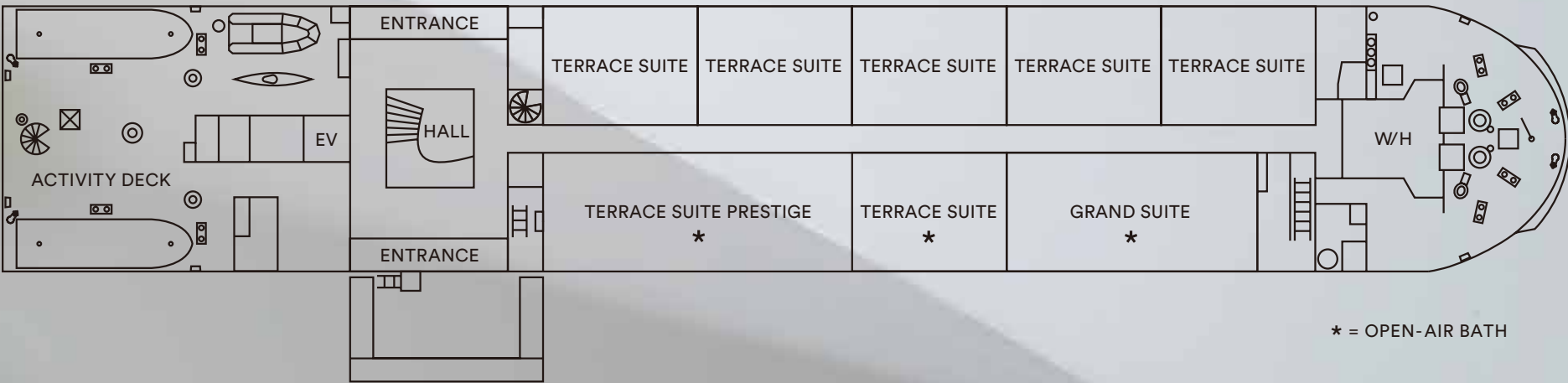
DECK 3



DECK 2



DECK 1



* = OPEN-AIR BATH

LOCATION

Bella Vista Marina
1364-6 Urasaki-cho, Onomichi, Hiroshima

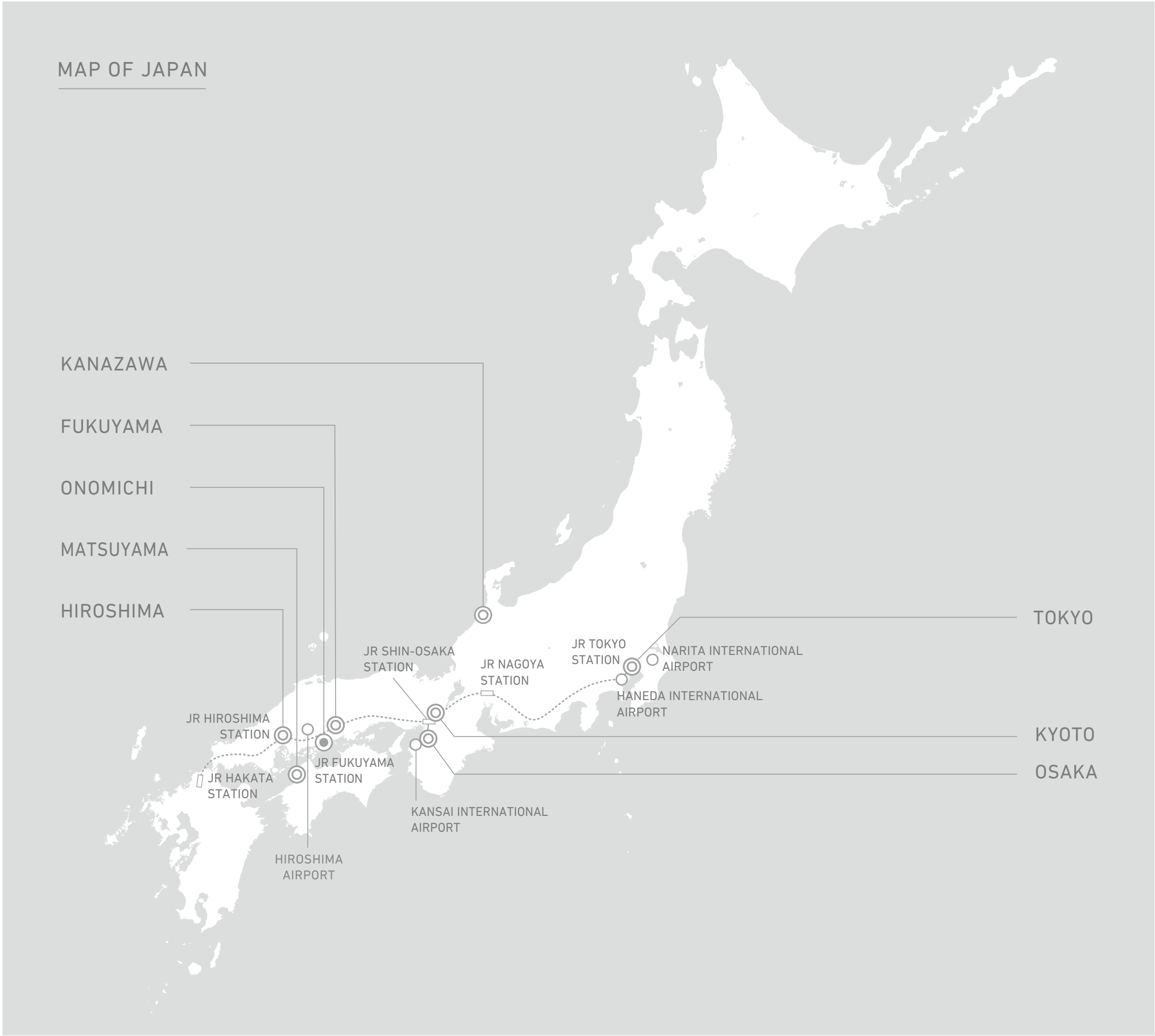
INQUIRY

Tel: +81-848-70-0023
Email: info-en@guntu.jp

ACCESS

By Shinkansen (Bullet Train)
TOKYO – FUKUYAMA / 3.5 hours
SHIN OSAKA – FUKUYAMA / 1 hour
From Fukuyama Station by car approx. 40 minutes

By Air
HANEDA AIRPORT – HIROSHIMA / 1.5 hours
From Hiroshima Airport by car approx. 1 hour





`guntu.jp`

