

A four-day voyage to immerse in the old and new charms of distinctive islands NEW

Beginning from our home port in Onomichi, this leisurely four-day voyage to enjoy eastern Setouchi extends as far as Shodoshima. Various goods once flowed along vital trade networks through the Seto Inland Sea, giving rise to many industries. After passing through the Onomichi Strait on the first day, guntō sails to an anchorage off Kitagishima, an island of stone quarries. The following day, the route travels beneath the road and rail crossing of the Great Seto Bridge, and slowly explores the waters off the coast of Bizen and around Shodoshima, known for products made in its mild climate. Discover this seaborne trade route through encounters with island history and traditional industries.



Kankakei Gorge

Schedule

| | |
|---------|--|
| 1st Day | Depart from Bella Vista Marina (3:00 p.m.) → Onomichi Strait → Innoshima Bridge → Bingo Sea → Shiraishi Strait → → Anchor offshore at Kitagishima, Okayama |
| 2nd Day | Depart from Kitagishima → Shiwaku Islands → Great Seto Bridge → Kazurajima Strait → → Hinase → Anchor offshore at Utsunomi Bay in Shodoshima, Kagawa One off-ship activity planned |
| 3rd Day | Depart from Utsunomi Bay → Ogijima → Great Seto Bridge → Ushijima → Takamishima → → Anchor at Takuma Bay, Kagawa One off-ship activity planned |
| 4th Day | Depart from Takuma Bay → Kasaoka Islands → Tomonoura → Abuto Kannon → Utsumi Bridge → → Momoshima → Arrive at Bella Vista Marina (11:00 a.m.) |

*Contents are subject to change without prior notice depending on the reservation date, and weather and sea conditions.
 *On both the second and third days, an off-ship excursion is planned for either the morning or afternoon.
 *The destinations of off-ship activities change depending on day of departure. Details will be shared after boarding.

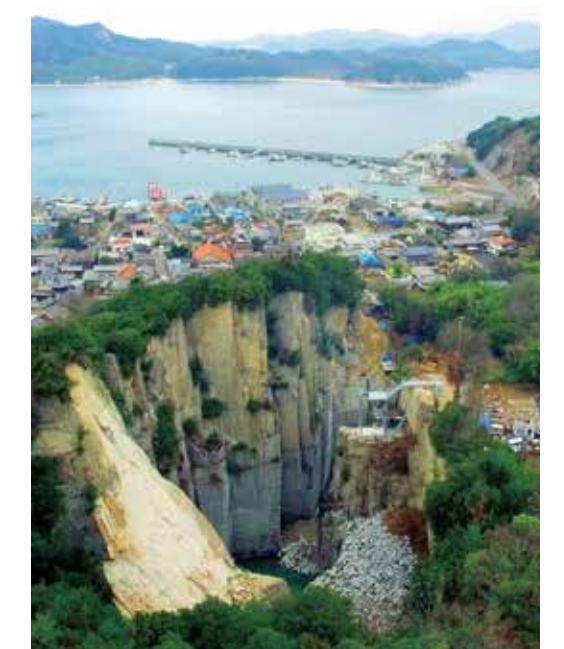
Tour includes : 3 breakfasts, 2 lunches, 3 dinners

Example of off-ship activities

- Walk on Kitagishima, an island famed for its stone quarries
- Visit the sacred Mt. Goish
- Visit a soy sauce brewery lasting 150 years
- Explore the townscape of Honjima constructed by the famed Shiwaku carpenters
- Make Bizen pottery that has been produced for over a millennium
- Walk in the Kankakei Gorge, a natural work of art



Honjima



Kitagishima

Onboard activity

- Experience of tea ceremony at the Lounge

| Departure dates | Rates | | | | | | | |
|--------------------|--------------------|---------------------|--------------------------------|---------------------|--------------------|---------------------|--------------------|---------------------|
| | Terrace Suite | | Terrace Suite w/ open-air bath | | Grand Suite | | The guntō Suite | |
| | 1 person per cabin | 2 persons per cabin | 1 person per cabin | 2 persons per cabin | 1 person per cabin | 2 persons per cabin | 1 person per cabin | 2 persons per cabin |
| 2025 Jun. 26 (Thu) | 1,600,000 | 875,000 | 1,900,000 | 1,025,000 | 2,500,000 | 1,325,000 | 3,100,000 | 1,625,000 |
| 2025 Sep. 25 (Thu) | 1,650,000 | 900,000 | 1,950,000 | 1,050,000 | 2,550,000 | 1,350,000 | 3,150,000 | 1,650,000 |
| 2025 Jul. 18 (Fri) | 1,700,000 | 925,000 | 2,000,000 | 1,075,000 | 2,600,000 | 1,375,000 | 3,200,000 | 1,675,000 |
| 2025 Nov. 21 (Fri) | 1,750,000 | 950,000 | 2,050,000 | 1,100,000 | 2,650,000 | 1,400,000 | 3,250,000 | 1,700,000 |

*The above rates are per person and are in Japanese Yen. (Tax included) ※All photos are for illustrative purposes.